

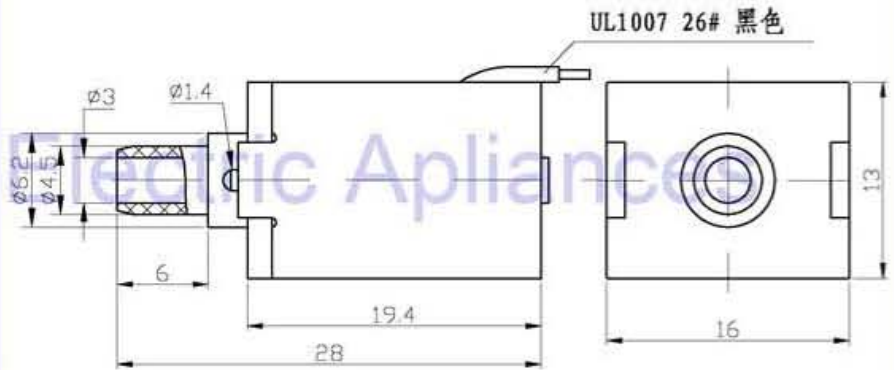
## ZHV-0520S Solenoid Valve

ISO/TS16949 ISO9000 ISO14000  
RoHS REACH CE UL VDE TÜV



总重量 Total Weight: 18g  
应用范围: 食品真空包装机  
APPLICATION: FOOD VACUUM PACKING MACHINE

类型: 二位三通 TYPE: Two position two way

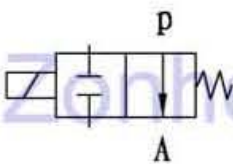


单位:mm Units:mm

### 综合特性 GENERAL FEATURES

- 常用压力: 0~375mmHg/0~0.5Bar  
Pressure: 0~375mmHg/0~0.5Bar
- 最小通径:  $\phi 1.8\text{mm}$   
Min Orifice:  $\phi 1.8\text{mm}$
- 流体介质: 空气  
Fluid medium: Air
- 寿命: 典型值为100万次 (on 1s, off 1s)  
Lify cycle: 1,000,000 cycles (on 1s, off 1s)
- 绝缘等级: B类  
Insulation class: class B

常开型/NO



### COIL DATA线圈资料

工作周期 (%) = $\frac{\text{工作时间}}{\text{工作时间} + \text{断开时间}} \times 100\%$ Duty cycle (%) = $\frac{\text{"ON" time}}{\text{"ON" time} + \text{"OFF" time}} \times 100\%$	连续 Continuous 100%	间断 Or less 50%	间断 Or less 25%	间断 Or less 10%
最大工作时间(秒) MAX. "on" time in seconds	$\infty$	55	19	3
瓦特(W) (20℃) Watts at 20℃	1.6	3.2	5.4	16
安匝数AT(20℃) Ampere-turns at 20℃	300	424	600	948

型号 Type no.	阻值(20℃) Resistance ( $\Omega$ ) $\pm 10\%$	线圈匝数 No. Turns	电压(VDC) Voltage DC			
ZHV-0520L-XX A XX	23	1150	6	8.5	12	19
No symbol L S	90	2290	12	17	24	38
三通 Three Way 常闭 NC 常开 NO	380	4500	24	34	48	76
电压 Voltage (V)	1440	8600	48	68	96	152
系列号 Serial No.: A, B, C...						
电阻 Resistance ( $\Omega$ )						